



GAT MONTHLY MEMBERSHIP PROGRESS REPORT

Results as of: 5/31/2021

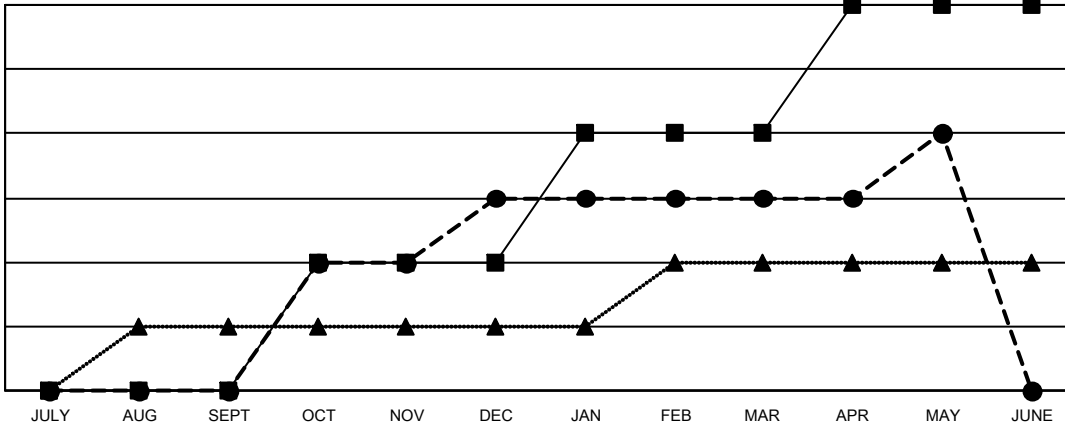
Multiple District 13

LOCATION: OHIO

Clubs			
RESULTS FOR 2020-2021			
QUARTER	NEW CLUB GOAL	NEW CLUBS	DROPPED CLUBS
JULY/AUG/SEPT	0	0	3
OCT/NOV/DEC	2	3	7
JAN/FEB/MAR	2	0	4
APR/MAY/JUNE	2	1	0

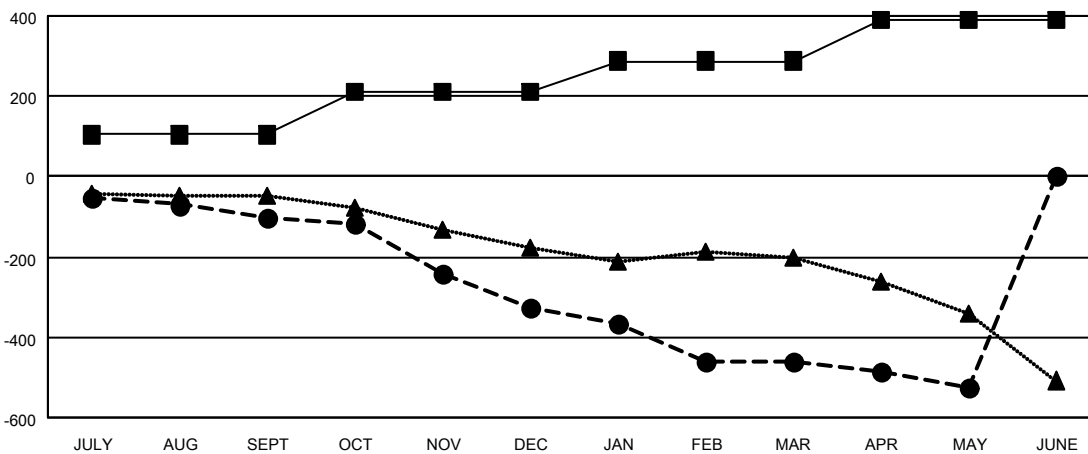
Members			
RESULTS FOR 2020-2021			
QUARTER	MEMBER GROWTH NET GOAL	MEMBER GROWTH ACTUAL	DROPPED MEMBERS ACTUAL (including transfers)
JULY/AUG/SEPT	104	118	202
OCT/NOV/DEC	109	231	423
JAN/FEB/MAR	75	128	249
APR/MAY/JUNE	104	104	161

GOALS AND ACTUAL NEW CLUBS CUMULATIVE



- - CURRENT YEAR GOALS FOR NEW CLUBS
- - CURRENT YEAR ACTUAL NEW CLUBS
- ▲ - LAST YEAR ACTUAL NEW CLUBS

GOALS AND ACTUAL MEMBERS CUMULATIVE



- - MEMBER GROWTH NET GOAL
- - MEMBER GROWTH ACTUAL
- ▲ - LAST YEAR MEMBERSHIP ACTUAL

DROPPED CLUBS: 14	
<u>DROPPED MEMBERS</u>	
DECEASED	175
CLUB CANCELLED	117
OTHER	743
TOTAL	1,035

161 CLUBS OF 390 ADDED 1 OR MORE NEW MEMBERS
CLICK HERE FOR CUMULATIVE MEMBERSHIP DATA

<u>GENDER DISTRIBUTION</u>	
MALE	7,186 (70.20%)
FEMALE	3,050 (29.80%)
TOTAL FAMILY UNIT MEMBERS	2,045
FAMILY MEMBERS PAYING HALF DUES	1,045